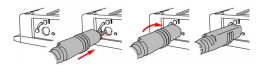




# HOBO Self-Describing 6-foot Pipe Temperature Sensor

## Product Images



## Short Description

For use with HOBO MX1104 and MX1105 multi-channel data loggers, this food-grade stainless-steel temperature sensor offers integrated strain relief, so the probe is secured to the logger. And it features Self-Describing technology to automatically communicate configuration information to the logger, without any programming or extensive user setup.

## Description

For use with HOBO [MX1104](#) and [MX1105](#) multi-channel wireless data loggers; this temperature sensor, which

is suitable for pipe mounting, offers integrated strain relief, so the probe remains secured to the logger. And it features Self-Describing technology to automatically communicate configuration information to the logger, without any programming or extensive user setup.

## Key Features

- Self-Describing technology for quick, easy set up
- Locking jack to ensure sensor is connected and stays connected
- Measurement range of -40° and 100°C (-40° to 212°F)
- Accuracy of  $\pm 0.15^{\circ}\text{C}$  from 0° to 70°C ( $\pm 0.27^{\circ}\text{F}$  from 32° to 158°F)
- Available in 1.8 m (6 ft)
- Faster response time
- Suitable for pipe mounting
- Data can be remotely accessed via the web, if the MX1104/MX1105 data logger is combined with an [MX Gateway](#).

This sensor operates in an indoor environment.

## Additional Information

Country of Manufacture	United States	
Explanation	Measurement Range	-40° to 100°C (-40° to 212°F)
	Accuracy	±0.15°C from 0° to 50°C (±0.27°F from 32° to 122°F), insert probe 2.3 cm (0.9 inches) minimum; see Plot A
	Resolution	0.002° at 25°C (0.003° at 77°F)
	Drift	<0.1°C (<0.2°F) per year
	Response Time in Air	2 minutes typical to 90% in air moving 1 m/s (2.2 mph)
	Response Time on a Pipe	Typically 2 times faster than the SD-TEMP-xx air/water/soil temperature probe; typically less than 1 minute to 90%
	Probe Housing	Copper-plated sensor tip
	Probe Dimensions	0.9 x 5.8 cm (0.38 x 2.3 inches)
	Cable Length	1.8 m (6 ft)
Brand	Onset HOBO	
Connector Type	Locking jack to ensure sensor is connected and stay connected	
Probe Included	Yes	
Housing	Cable	
Typical applications	Building Monitoring, Building Performance	
Measurements	Temperature	
Compatible With	HOBO MX1104 & MX1105 Wireless Analogue Multi-channel Data Loggers	