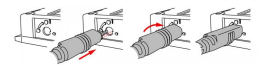


HOBO Self-Describing 6-foot Stainless Steel Temperature Sensor

Product Images



Short Description

For use with HOBO MX1104 and MX1105 multi-channel data loggers, this food-grade stainless-steel temperature sensor offers integrated strain relief, so the probe is secured to the logger. And it features Self-Describing technology to automatically communicate configuration information to the logger, without any programming or extensive user setup.

Description

For use with HOBO [MX1104](#) and [MX1105](#) multi-channel data loggers, this food-grade stainless-steel

temperature sensor offers integrated strain relief, so the probe is secured to the logger. And it features Self-Describing technology to automatically communicate configuration information to the logger, without any programming or extensive user setup.

Key Features

- Self-Describing technology for quick, easy setup
- Locking jack to ensure sensor is connected and stay connected
- Food-grade stainless-steel temperature probe
- Measurement range of -40° and 100°C (-40° to 212°F)
- Accuracy of $\pm 0.15^{\circ}\text{C}$ from 0° to 70°C ($\pm 0.27^{\circ}\text{F}$ from 32° to 158°F)
- Available in 1.8 m (6 ft)
- Data can be remotely accessed via the web, if the MX1104/MX1105 data logger is combined with an [MX Gateway](#).

This sensor operates in an indoor environment.

Additional Information

Country of Manufacture	United States	
Explanation	Measurement range	-40° to 100°C (-40° to 212°F)
	Accuracy	±0.15°C from 0° to 50°C (±0.27°F from 32° to 122°F), insert probe 5.08 cm (2 inches) minimum; see Plot A
	Resolution	0.002° at 25°C (0.003° at 77°F)
	Drift	<0.1°C (<0.2°F) per year
	Response Time in Air	3 minutes typical to 90% in air moving 1 m/s (2.2 mph)
	Response Time in Stirred Water	15 seconds typical to 90%
	Probe Diameter	3.2 mm ±0.25 mm (0.12 inches ±0.01 inches)
	Probe Length	10.2 cm (4 inches)
	Probe Housing	Food-grade stainless steel (#316 stainless steel) Note: The stainless steel probe is waterproof, but the handle is not intended for prolonged use in water or moist environments, especially those with temperatures greater than 30°C (86°F). For more details contact Onset Computer Corporation or an Onset authorized dealer.
	Cable Length	1.8 m (6 ft)
Brand	Onset HOBO	
Connector Type	Locking jack to ensure sensor is connected and stay connected	
Probe Included	Food-grade stainless-steel temperature probe included	
Typical applications	Food Safety	
Measurements	Temperature	

Compatible With

HOBO MX1104 & MX1105 Wireless Analogue Multi-channel Data Loggers