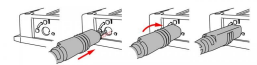




HOBO Self-Describing 4-20 mA Input Cable Sensor

Product Images



Short Description

This 4-20 mA input cable offers integrated strain relief to keep it connected to the logger, and it features Self-Describing technology to automatically communicate configuration information to the logger.

Description

For use with HOBO [MX1104](#) and [MX1105](#) multi-channel data loggers, this 4-20 mA input cable offers integrated strain relief to keep it connected to the logger, and it features Self-Describing technology to automatically communicate configuration information to the logger.

Key Features

- Self-Describing technology for quick, easy setup
- Locking jack to ensure cable is connected and stays connected
- Measurement range of 0 to 20.1 mA
- Accuracy of $\pm 0.001 \text{ mA} \pm 0.2\%$ of absolute current
- Cable length: 47 cm (18.5 in)
- Data can be remotely accessed via the web, if the MX1104/MX1105 data logger is combined with an [MX Gateway](#).

This sensor operates in an indoor environment.

Additional Information

Country of Manufacture	United States
Brand	Onset HOBO
Housing	Cable
Range	0 to 20.1 mA
Resolution	0.002% of full scale
Typical applications	Building Monitoring, Building Performance, HVAC
Measurements	4-20mA
Compatible With	HOBO MX1104 & MX1105 Wireless Analogue Multi-channel Data Loggers