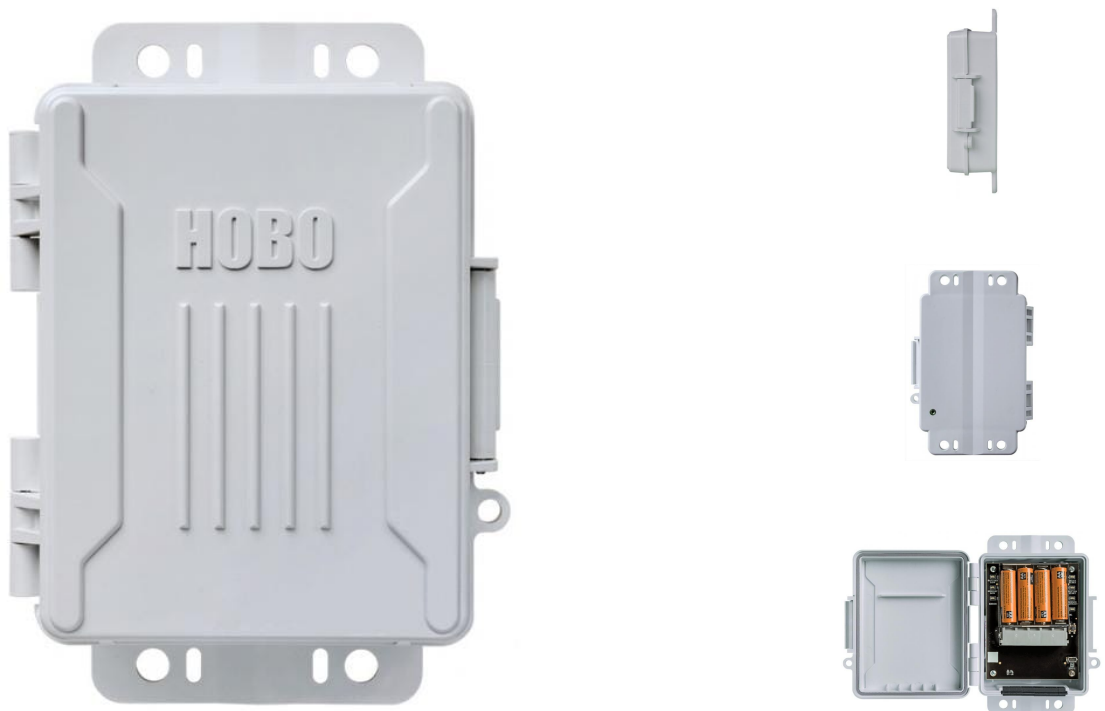




HOBO H21 USB Micro Station Weather/Energy Data Logger (add sensors as required)

Product Images



Short Description

Rugged and compact, the redesigned HOB0 H21 USB Micro Station is a weatherproof data logger for multi-channel monitoring. This battery-powered station accepts up to five plug-and-play Smart Sensors and is equipped with a built-in USB port for fast, efficient data readout to a computer, and an integrated mounting tabs for easy installation.

Requires a [CABLE-USBMB](#) and HOB0ware software (select from options below).

Description

Looking for a cellular option? The [MicroRX Station](#) offers integrated solar panel or battery-power for affordable remote data offload via 4G cellular.

Interested in water level and flow monitoring? The [MicroRX Water Level Station](#) combines the MicroRX Station with Onset's own water level sensor and pre-programmed water flow formulas.

Key Features


- Compact size for easy deployment
- Weatherproof IP66 enclosure for harsh environments
- Data offload via [CABLE-USBMB](#)
- Includes five smart sensor inputs
- Hinged door and integrated mounting tabs
- Runs for up to a year on four standard AA batteries
- Compatible with HOB0ware and HOB0ware Pro software for logger setup, graphing and analysis.

The H21 can be used with a wide range of sensors; some of the more popular ones are available below. Contact us if you need any help specifying an appropriate system.

Buying in Bulk, or Just Want Some Helpful Advice?

Call **+44 (0)1243 558270**, click on the webchat box below, or fill out our [contact form](#).

Additional Information

Brand	Onset HOBO	
Country of Manufacture	United States	
Contents	HOBO H21-USB Micro Station Four AA 1.5V alkaline batteries Rubber plugs Grease packet Screws and washers Cable ties	
Explanation	Operating Range	-20° to 50°C (-4° to 122°F) with alkaline batteries -40 to 70°C (-40 to 158°F) with lithium batteries
	Smart Sensor Connectors	5
	Smart Sensor Data Channels	Maximum of 15 (some smart sensors use more than one data channel; see sensor manual for details)
	Smart Sensor Network Cable Length	100 m (328 ft) maximum
	Logging Interval	1 second to 18 hours
	Start Modes	Immediate, at interval, push button, or delayed start
	Memory Modes	Stop when full or wrap when full
	Memory	512 KB nonvolatile flash data storage
	Time Accuracy	0 to 2 seconds for the first data point and ±5 seconds per week at 25°C (77°F)
	Battery Type	Four AA 1.5 V alkaline batteries for operating conditions of -20° to 50°C (-4° to 122°F); four AA 1.5 V lithium batteries for operating conditions of -40 to 70°C (-40 to 158°F)
	Battery Life	1 year, typical use (up to five sensors with 1 minute or greater logging interval)
	Communication Type	USB 2.0 interface
	Full Memory Download Time	4 minutes
	Enclosure Access	Hinged door secured by one latch with eyelet for use with user-supplied padlock
	Materials	Outer enclosure: Polycarbonate/PBT blend with stainless steel hinge pins; Gaskets: Silicone rubber; Cable channel: EPDM rubber
Dimensions	17.04 x 11.94 x 4.47 cm (6.71 x 4.70 x 1.76 in.) see diagrams in manual Padlock hole diameter: 0.58 cm (0.23 in.)	
Weight	414g (14.6 oz.)	
Environmental Rating	Weatherproof enclosure, NEMA 4X and IP66	
	The CE Marking identifies this product as complying with all relevant directives in the European Union (EU).	
Onset Product Series	H21	
Measurements	4-20mA, Amp Hour (Ah), Barometric Pressure, Current AC, Dew Point, Humidity, kWh, Leaf Wetness, Light Intensity, PAR/Quantum Light, Power Factor (PF), Pulse, Rainfall, Soil Moisture, Solar Radiation, Temperature, Universal, Volt-Amp Reactive, Volt-Amp Reactive hour, Volt-Amps (VA), Voltage DC, Water Flow, Watt Hours (Wh), Watts (W), Wind Direction, Wind Speed	
Typical applications	Energy, Environmental (Indoor), Environmental (Outdoor), Field Research, Non Specific, Weather Monitoring	
Power	Battery only	
Dimensions	17.04 x 11.94 x 4.47 cm	
Batteries	Four AA 1.5 V alkaline batteries for operating conditions of -20° to 50°C (-4° to 122°F); four AA 1.5 V lithium batteries for operating conditions of -40 to 70°C (-40 to 158°F)	
Power	Battery only	

Additional Options

Mounting Options	HOBO 2-Metre Tripod Kit (M-TPB-KIT)
	HOBO 3-Metre Tripod Kit (M-TPA-KIT)
HOBOWare Pro Software Options	HOBOWare Pro on USB Drive (USB cable included)
	HOBOWare Pro on CD (USB Cable Included)
	HOBOWare Pro - Download Only (USB cable NOT included)
USB Cable (included with HOBOWare Pro on USB Drive & CD)	HOBO U-Series to PC USB Cable
Temperature Sensors	12-Bit Temperature (2m cable) Smart Sensor
	12-Bit Temperature (6m cable) Smart Sensor
	12-Bit Temperature (17m cable) Smart Sensor
Relative Humidity Sensors	12-bit Temperature/Relative Humidity (2m cable) Smart Sensor
	12-bit Temperature/Relative Humidity (8m cable) Smart Sensor
Rainfall Sensors	Davis® 0.01" Rain Gauge Smart Sensor
	Davis® 0.2 mm Rain Gauge Smart Sensor
	0.01" Rain Gauge (2m cable) Smart Sensor
	0.2 mm Rainfall (2m cable) Smart Sensor
Wind Sensors	Davis® Wind Speed and Direction Smart Sensor
	Wind Direction Smart Sensor
	Wind Speed Smart Sensor
	Wind Speed and Direction Set Smart Sensor
Barometric Pressure Sensor	Smart Barometric Pressure Sensor
Soil Moisture (Sensors)	EC5 Soil Moisture Smart Sensor
	10HS Soil Moisture Smart Sensor
Leaf Wetness Sensor	Leaf Wetness Smart Sensor
Light Intensity Sensors	Photosynthetic Light (PAR) Smart Sensor
	Solar Radiation (Silicon Pyranometer) Smart Sensor

Analogue Input Sensor Adapters

12-Bit Voltage Input Adapter Sensor

12-Bit 4-20 mA Input Adapter Sensor

Pulse Input Sensor Adapters

Electronic Switch Pulse Input Adapter - 1 Meter Sensor

Electronic Switch Pulse Input Adapter - 6 Meter Sensor

Contact Closure Pulse Input Adapter - 1 Meter Sensor

Closure Pulse Input Adapter - 6 Meter Sensor