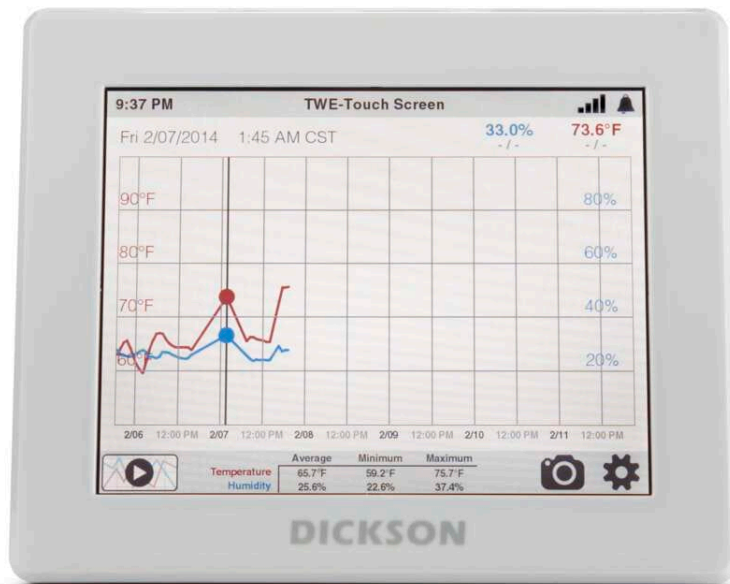




# DISCONTINUED: Dickson TWE Touchscreen Data Logger (WiFi/Ethernet)

## Product Images



## Short Description

Dickson TWE WiFi / Ethernet Touchscreen Data Logger combines a touchscreen interface with the power of DicksonOne. Log temperature/ humidity/differential pressure using the replaceable sensors. Feature-rich, easy to use. Access data history from anywhere.

## Description

---

The Dickson TWE is feature-laden, easy-to-use, and allows users to access their data history anywhere. It automatically collects temperature, humidity or differential pressure data (depending on the replaceable sensor(s) you select). Easily set alarms and track trends without wasting time collecting charts or downloading data. The TWE offers the same functionality as the [TWP](#), without the addition of Power Over Ethernet (POE).

### TWE Key Features

- Capacitive Touch LCD Screen
- Interchangeable Replaceable Sensors
- User-selectable Sample Rate
- Customisable Alarms
- Efficient fleet management: apply bulk updates across multiple data loggers

Note: DicksonOne Data Loggers require a DicksonOne SaaS subscription to function correctly – contact us for pricing based on the number of loggers being purchased.

### Specifications

**Alarm Type** Audible/Visual (Phone, Text, and Email Alarms via DicksonOne Subscription)  
**Ambient Operating RH Conditions** 0 to 95% RH non-condensing (Logger Only)  
**Ambient Operating Temperature Conditions** 14 to 140F (-10 to 60C)  
**Antenna Type** Internal  
**Approvals** CE  
**Battery Backup** 70 Hours  
**Battery Type** Rechargeable Backup Battery  
**Calibration Options** N100, N300, N400, N995  
**Data Capacity** Approx 1,000,000 sample points (backup)  
**Dimensions** 8.5 x 1.75 x 7" (21 x 4.5 x 18cm)  
**Display Dimensions** 8" Diagonal  
**Display Type** LCD Touchscreen  
**Display Update Rate** Sample Interval Dependent (User Selectable)  
**Download Type** WiFi/Ethernet (DicksonOne Cloud), USB  
**Enclosure** Case Front: Polycarbonate; Case Back and Pods; ABS  
**Included Accessories** AC Adapter, Replaceable Sensor(s), Mounting Bracket  
**Mounting Options** Mounting Bracket (Included with Touchscreen)  
**PC Requirements** Windows 7 or more recent  
**Power Cord** 6 ft  
**Power Source** 100-240 VAC 50/60Hz 12V=1A  
**Required Software** DicksonOne SaaS Package, DicksonWare VERSION TBD  
**Resolution** LCD TBD  
**Sample Interval** User selectable on device and in DicksonOne (60 seconds, 90 seconds, 2 minutes, 5 minutes, 10 minutes, 15 minutes, 30 minutes, 1 hour)  
**Sensor Type** Replaceable Sensor (See Accessories for more information)  
**Unit Weight** 1.45lbs  
**Units/Pkg** 1  
**Warranty** 12-month

Explanation

Promotion

**This product has been discontinued. See the [Dickson TWP Touchscreen Data Logger \(WiFi/Ethernet +POE\)](#)**

Brand

Dickson

Typical applications

Environmental (Indoor), Life Sciences, Medical, Pharmaceutical

Measurements

Differential Pressure, Humidity, Temperature

## Additional Options

---

<b>Replaceable Sensor Options</b>	RTMP Ambient Temperature Sensor
	RTRH-R Temperature & Humidity Sensor
	RS080 Differential Pressure Sensor (2")
	RS081 Differential Pressure Sensor (0.5")
	RTD Sensor
	RKTC K-Thermocouple Sensor
<b>Temperature Calibration Certificate</b>	RTHM Glycol Thermistor Sensor
	2 Point Temperature Calibration (0°C / 60°C)
	2 Point Temperature Calibration (please specify temperature points)
<b>Temperature &amp; Humidity Calibration Certificate</b>	1 Point Temperature Calibration (0°C)
	Temperature & Humidity Calibration @ 20°C and 50RH
	Temperature & Humidity Calibration (please specify measurement points required)