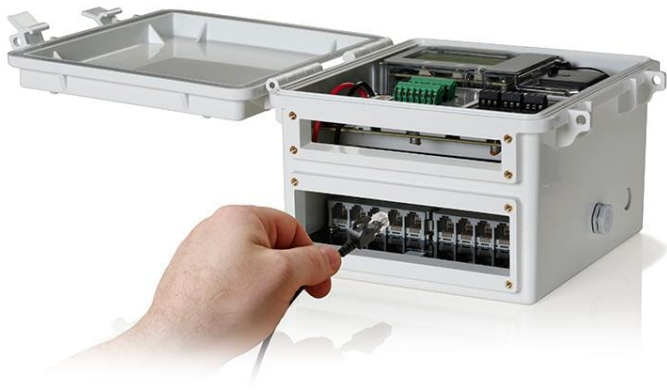




# HOBO RX3000 Remote Monitoring Data Logging Station

## Product Images







## Short Description

---

The HOBOnet RX3000 is Onset's next-generation remote data logging station that provides instant access to site-specific environmental data anywhere, anytime via the internet.

## Description

---

**The HOBOnet RX3000 is Onset's most flexible remote data logging station and provides instant access to site-specific environmental data anywhere, anytime via the Internet.**

The RX3000 combines the flexibility and sensor quality of more expensive systems, an onboard LCD display, and the convenience of plug-and-play operation.

The RX3000 station is the main component of the cost-effective and scalable [HOBOnet Field Monitoring System](#) for crop management, environmental research, warehouse, cold chain, and greenhouse operations.

- Flexible support for a broad range of sensors
- LCD display for easy field deployment
- Works on 4G/3G/2G cellular
- Cloud-based 24/7 data access via [HOBOLink](#) web-enabled software platform
- Plug-and-play operation
- Alert notifications via text/email
- Rugged double-weatherproof enclosure
- Optional analogue input and relay modules
- Optional remote water level and water flow monitoring with the [RXMOD-W1](#) water level module.

The RX3000 is compatible with the full range of [Onset Smart sensors & Onset HOBOnet wireless sensors](#), plus third party compatibility using analogue connections (Please [contact us](#) for advice and compatibility). The RX3000 can provide an automated data feed to [AQUARIUS Analytics Software for Water Environments](#).

Note: [HOBOWare software](#) and USB cable are required for initial setup of WiFi units or Ethernet units with Static IP addresses.



# Additional Information

|                        |                                                                                                                                                                                                                                                                                                                                                                                                          |
|------------------------|----------------------------------------------------------------------------------------------------------------------------------------------------------------------------------------------------------------------------------------------------------------------------------------------------------------------------------------------------------------------------------------------------------|
| Country of Manufacture | United States                                                                                                                                                                                                                                                                                                                                                                                            |
| Explanation            | <div>COMPUTER</div> Access Via Web Browser                                                                                                                                                                                                                                                                                                                                                               |
|                        | <div>OUTDOOR UNIT</div> Environmental Rating: NEMA 4X (requires proper installation of cable channel system). Outer enclosure: Polycarbonate/PBT blend with stainless steel hinge pins and brass inserts; Inner enclosure: Polycarbonate; Gaskets: Silicone rubber; Cable channel: EPDM rubber; Cable opening cover: Aluminium with ABS plastic thumb screws; U-Bolts: Steel with zinc dichromate finish |
|                        | <div>DIMENSIONS</div> 18.6 x 18.1 x 11.8 cm                                                                                                                                                                                                                                                                                                                                                              |
|                        | <div>BATTERIES</div> 4 Volt, 10 AHr, rechargeable sealed lead-acid                                                                                                                                                                                                                                                                                                                                       |
|                        | <div>POWER</div> Solar Powered or if external power required using one of these options: AC power adapter (AC-U30), solar panel (SOLAR-5W), or external power source 5 V DC to 17 V DC with external DC power cable (CABLE-RX-PWR)                                                                                                                                                                       |
|                        | <div>SOFTWARE</div> Data is accessed via HOBOLink through a web browser. HOBOWare Pro may be useful                                                                                                                                                                                                                                                                                                      |
| Brand                  | Onset HOBO                                                                                                                                                                                                                                                                                                                                                                                               |
| Channel(s)             | Maximum of 15 smart sensor data channels (some smart sensors use more than one data channel; see sensor manual for details)                                                                                                                                                                                                                                                                              |
| Onset Product Series   | RX                                                                                                                                                                                                                                                                                                                                                                                                       |
| Typical applications   | Building Monitoring, Building Performance, Cement Curing, Datalogging, Energy, Environmental (Indoor), Environmental (Outdoor), Field Research, HVAC, Physical Movement, Thermal Comfort, Weather Monitoring                                                                                                                                                                                             |

|                 |                                                                                                                                                                                                                                                                                                                                                                                                                                                                                                                                                                                                                                                       |
|-----------------|-------------------------------------------------------------------------------------------------------------------------------------------------------------------------------------------------------------------------------------------------------------------------------------------------------------------------------------------------------------------------------------------------------------------------------------------------------------------------------------------------------------------------------------------------------------------------------------------------------------------------------------------------------|
| Measurements    | 4-20mA, Air Velocity, Amp Hour (Ah), Amps (A), Barometric Pressure, CO2, Compressed Air Flow, Current AC, Current DC, Dew Point, Differential Pressure, Evapotranspiration, Event, Flood Alert, Humidity, Kilowatts (kW), kWh, Leaf Wetness, Light Intensity, Light On/Off, Moisture, Motor On/Off, PAR/Quantum Light, Power Factor (PF), Pressure, Pulse, Rainfall, Soil Moisture, Solar Radiation, Temperature, Universal, Volatile Organic Comp., Volt-Amp Reactive, Volt-Amp Reactive hour, Volt-Amps (VA), Voltage AC, Voltage DC, Volts (V), Water Flow, Water Level, Water Temperature, Watt Hours (Wh), Watts (W), Wind Direction, Wind Speed |
| Compatible With | Full range of Onset HOBOnet wireless and HOBOnet plug & play sensors, plus third party compatibility using analogue connections (Please contact us for advice and compatibility).                                                                                                                                                                                                                                                                                                                                                                                                                                                                     |
| Installation    | Installation is very simple and can be carried out by almost anyone with a few basic tools. The only thing you should remember is to take care if you have to work at height.                                                                                                                                                                                                                                                                                                                                                                                                                                                                         |

## Additional Options

|                                                                     |                                                                           |
|---------------------------------------------------------------------|---------------------------------------------------------------------------|
| <b>Data Plan</b>                                                    | Basic 4G Plan - 60 minutes interval - up to 22 sensors (SP-811)           |
|                                                                     | Standard 4G Plan - 10 minutes interval - up to 25 sensors (SP-813)        |
|                                                                     | Premium 4G Plan - 10 minutes interval - up to 65 sensors (SP-815)         |
| <b>Mounting Options</b>                                             | HOBO 2-Metre Tripod Kit (M-TPB-KIT)                                       |
|                                                                     | HOBO 3-Metre Tripod Kit (M-TPA-KIT)                                       |
| <b>Additional Power Options</b>                                     | 15 Watt Solar Panel (SOLAR-15W)                                           |
|                                                                     | 5 Watt Solar Panel (SOLAR-5W)                                             |
|                                                                     | Power Adapter (AC) (SKU: AC-U30-EU)                                       |
|                                                                     | External DC Power Cable for RX3000 (CABLE-RX-PWR)                         |
| <b>HOBOWare Pro Software Options</b>                                | HOBOWare Pro on USB Drive (USB cable included)                            |
|                                                                     | HOBOWare Pro on CD (USB Cable Included)                                   |
|                                                                     | HOBOWare Pro - Download Only (USB cable NOT included)                     |
| <b>USB Cable (included with HOBOWare Pro on USB Drive &amp; CD)</b> | HOBO U-Series to PC USB Cable                                             |
| <b>Optional Sensors (Hold down Ctrl to select multiple options)</b> | 12-Bit Temperature Smart Sensor - 2m cable (S-TMB-M002)                   |
|                                                                     | 12-bit Temperature/Relative Humidity Smart Sensor - 2m cable (S-THC-M002) |
|                                                                     | Radiation Shield for Temp/RH Sensor (RS3-B)                               |
|                                                                     | Davis Wind Speed and Direction Smart Sensor (S-WCF-M003)                  |
|                                                                     | Wind Speed and Direction Smart Sensor Set (S-WSET-B)                      |
|                                                                     | Full Crossarm for Wind Speed/Direction Sensors (M-CAA)                    |
|                                                                     | Ultrasonic Wind Speed & Direction Smart Sensor (S-WCG-M003)               |
|                                                                     | Barometric Pressure Smart Sensor (S-BPB-CM50)                             |
|                                                                     | Leaf Wetness Smart Sensor (S-LWA-M003)                                    |
|                                                                     | Solar Radiation (Silicon Pyranometer) Smart Sensor (S-LIB-M003)           |
|                                                                     |                                                                           |

|                                                                 |                                                                        |
|-----------------------------------------------------------------|------------------------------------------------------------------------|
|                                                                 | Solar Radiation Sensor Bracket (M-LBB)                                 |
| <b>Rainfall Sensors</b>                                         | Davis 0.2 mm Resolution Rain Gauge Smart Sensor (S-RGF-M002)           |
|                                                                 | HOBO 0.2 mm Resolution Rain Gauge Smart Sensor (2m cable) (S-RGB-M002) |
| <b>Soil Moisture Sensors</b>                                    | EC-5 Soil Moisture Smart Sensor (S-SMC-M005)                           |
|                                                                 | 10HS Soil Moisture Smart Sensor (S-SMD-M005)                           |
| <b>Water Level Sensor Module</b>                                | Water Level Sensor Module for RX3000 (RXMOD-W1)                        |
| <b>Water Level, Temperature &amp; Pressure Sensors</b>          | Fresh Water Stainless Steel - 4 Metre Range (MX2001-04-S)              |
|                                                                 | Fresh Water Stainless Steel - 9 Metre Range (MX2001-01-S)              |
|                                                                 | Fresh Water Stainless Steel - 30 Metre Range (MX2001-02-S)             |
|                                                                 | Fresh Water Stainless Steel - 76 Metre Range (MX2001-03-S)             |
|                                                                 | Salt Water Titanium - 4 Metre Range (MX2001-04-Ti-S)                   |
|                                                                 | Salt Water Titanium - 9 Metre Range (MX2001-01-Ti-S)                   |
|                                                                 | 1.0m RWL Cable (CABLE-RWLMOD-1.0)                                      |
|                                                                 | 2.0m RWL Cable (CABLE-RWLMOD-2.0)                                      |
| <b>Water Level Sensor Cables</b>                                | 5.0m RWL Cable (CABLE-RWLMOD-5.0)                                      |
|                                                                 | 10.0m RWL Cable (CABLE-RWLMOD-10.0)                                    |
|                                                                 | 15.0m RWL Cable (CABLE-RWLMOD-15.0)                                    |
|                                                                 | 30.0m RWL Cable (CABLE-RWLMOD-30.0)                                    |
|                                                                 | 60.0m RWL Cable (CABLE-RWLMOD-60.0)                                    |
|                                                                 |                                                                        |
| <b>Additional Modules</b>                                       | 1 X 4 Channel Analogue                                                 |
|                                                                 | 1 X Relay                                                              |
|                                                                 | 1 X 4-Channel Analog & 1 X Relay                                       |
|                                                                 | 2 X Relay                                                              |
| <b>RX3000 Accessories (Use CTRL to select multiple options)</b> | Cable Caddy                                                            |



|                                       |
|---------------------------------------|
| Smart Sensor Consolidator Box         |
| 1-to-2 Sensor Communication Adapter   |
| 2 Metre Smart Sensor Extension Cable  |
| 5 Metre Smart Sensor Extension Cable  |
| 10 Metre Smart Sensor Extension Cable |
| 25 Metre Smart Sensor Extension Cable |
| Weatherproof Extension Housing        |
| 2 Metre Tripod Kit                    |
| 3 Metre Tripod Kit                    |
| 2 Metre Tripod Tower with Mast        |
| 3 Metre Tripod Tower with Mast        |
| 1.5 Metre Mast                        |
| 3 Metre Mast                          |