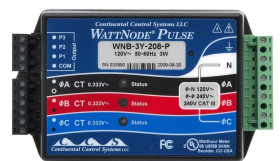
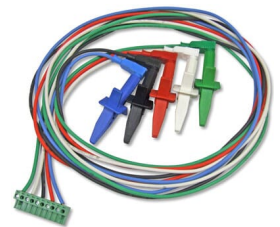


HOBO 10 Channel USB Energy Logger Kit (3 Phase)

Product Images





Short Description

This 10 channel energy logger kit can be expanded to 15 channels and combines the U30-NRC-000-10-S045-000 Data logger with all the accessories necessary to monitor amperage used in a three phase system.

Description

The HOBOWare 10 Channel Energy Logger Kit is a modular, flexible, reconfigurable logging system for applications in Energy, and Industrial monitoring applications. The kit can be expanded to 15 channels and combines the

U30-NRC-000-10-S045-000 Data logger with all the accessories necessary to monitor amperage used in a three phase system.

Kit Comprises

- U30-NRC-000-10-S045-000, Multichannel USB Standalone Energy Monitor
- AC-U30-EU, AC Battery Charger for U30 - 240V, 50Hz
- S-UCC-M001, Pulse Input Adaptor - Electronic Switch
- A-WNB-LEADSET, Voltage Input Lead set for use with Wattnode Transducer
- T-WNB-3Y-400, Wattnode kWh Xducer 400VAC Wye (Pulse out) Line to Neutral 230VAC, 1/3 Phase connection (Please note if you want to measure two or three separate branch circuits simultaneously you will require the P version, You will also require 2 or 3 x S-UCC-M001 Pulse adaptors)
- 3 X T-MAG-0400-05, AC Split-Core CT mini; 5 Amp; 333mV out (Higher Current ratings available)
- BHW-PRO-CD HOBOWare Pro Logger software with USB connection cable.

Key Features

- Smart sensors offer plug-and-play convenience
- Provides 12 volt excitation for external sensors
- Mains or battery power options
- Compatible with a wide range of external sensors.

Additional optional 'Smart' measurement sensors include: AC Current, Temperature, Relative Humidity, DC Voltage, 4 - 20mA, AC Voltage, Carbon Dioxide, DC Current, Kilowatt Hours, Kilowatts.

Please note that the additional images are indicative.

Additional Information

Brand	Onset HOBO
Channel(s)	10, 15
Onset Product Series	U30
Typical applications	Building Monitoring, Energy, Environmental (Indoor), Industrial
Measurements	4-20mA, Amp Hour (Ah), Amps (A), Current AC, Current DC, Humidity, Kilowatts (kW), kWh, Power Factor (PF), Temperature, Universal, Volt-Amp Reactive, Volt-Amp Reactive hour, Volt-Amps (VA), Voltage AC, Voltage DC, Volts (V), Watt Hours (Wh), Watts (W)
Compatible With	U30