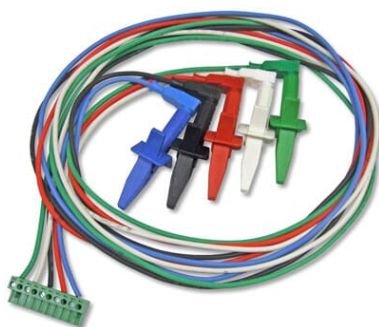
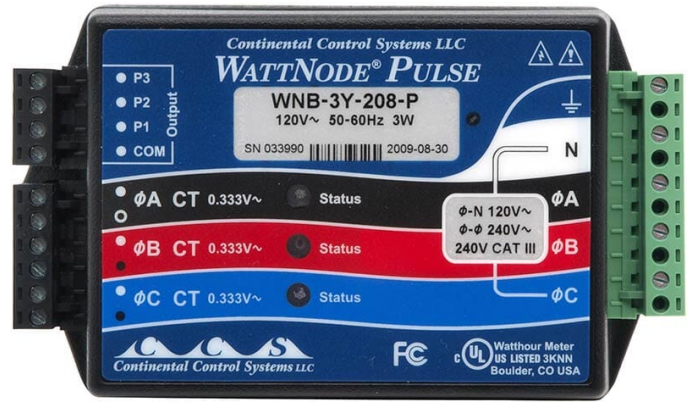


6 Channel Energy Logger Kit (3 Phase)

Product Images





Short Description

This 6 channel energy logger kit can be expanded to 6 channels and combines the H22-001 HOBO Energy logger with all the accessories necessary to monitor amperage used in a three phase system.

Description

This 6 channel energy logger kit can be expanded to 6 channels and combines the H22-001 HOBO Energy logger with all the accessories necessary to monitor amperage used in a three phase system.

Please note that the additional images are indicative.

Kit Comprises:

- H22-001, Hobo Energy Logger
- P-AC-1, Power supply UK version (This is optional as Logger is battery powered)
- ADAPT-SER-USB, USB to Serial Adaptor connects Logger to PC
- S-UCC-M001, Pulse Input Adaptor - Electronic Switch
- A-WNB-LEADSET, Voltage Input Lead set for use with Wattnode Transducer
- T-WNB-3Y-400, Wattnode kWh Xducer 400VAC Wye (Pulse out) Line to Neutral 230VAC, 1/3 Phase connection (Please note if you want to measure two or three separate branch circuits simultaneously you will require the P version, You will also require 2 or 3 x S-UCC-M001 Pulse adaptors)
- 3 X T-MAG-0400-05, AC Split-Core CT mini; 5 Amp; 333mV out (Higher Current ratings available)
- BHW-PRO-CD HOBOWare Pro Logger software

The 6 Channel HOBO Energy Logger kit is a modular, flexible, reconfigurable logging system for applications in Energy, and Industrial monitoring applications.

'Smart' measurement sensors include: AC Current, Temperature, Relative Humidity, DC Voltage, 4 - 20mA, AC Voltage, Carbon Dioxide, DC Current, Kilowatt Hours, Kilowatts.

Smart sensors offer plug-and-play convenience Provides 12 volt excitation for external sensors Mains or battery power options. Compatible with a wide range of external sensors

Additional Information

Brand	Onset HOBO
Channel(s)	6, 15
Onset Product Series	H22
Typical applications	Building Monitoring, Energy, Environmental (Indoor), HVAC
Measurements	4-20mA, Air Velocity, CO2, Current AC, Differential Pressure, Flow, Humidity, Pressure, Pulse, Temperature, Voltage AC, Voltage DC
Compatible With	H22