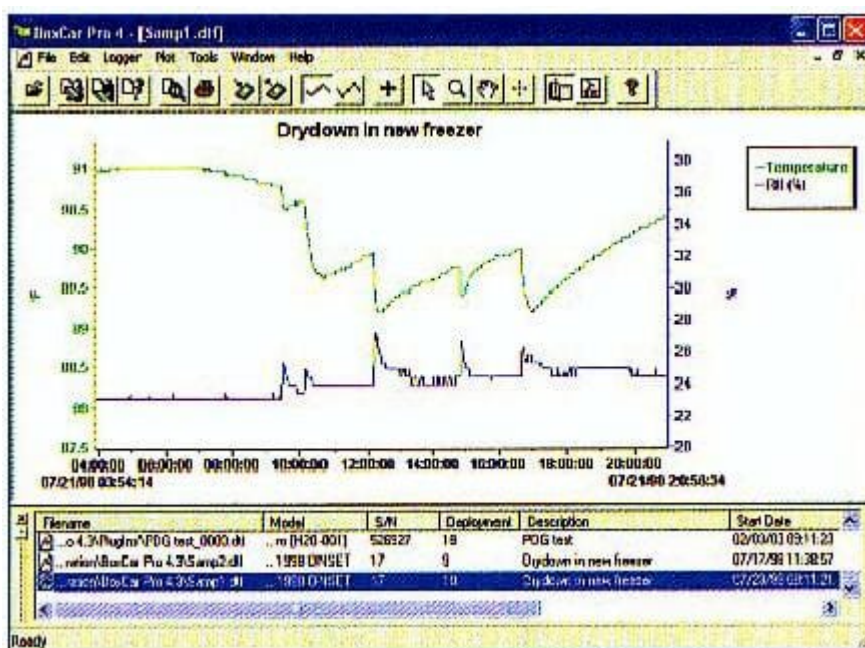




# BoxCar Pro 4.3 Software BoxCar Pro

## Product Images



## Short Description

Excellent Windows based BoxCar Pro BCP4.3-DL software for most 8-bit Hobo Dataloggers.

## Description

Excellent Windows based BoxCar Pro BCP4.3-DL software for most 8-bit Hobo Dataloggers.

- Launch - Readout - Analyse
- Set sampling intervals.
- Set start time and memory modes.
- Verify logger setup & battery status.

- Synchronise clocks.
- Compare multiple parameters on one graph or successive deployments.
- Set axis ranges.
- Overlay data from different deployments.
- Zoom on data of interest.
- Add limit lines to graphs.
- Create files, legends and new axis.
- Export, or print graphs and data.
- Extract key information from logged data.
- Log run and off time, percentage, or number of on/off states with State loggers.
- Log rainfall per interval with Event loggers.

The earlier, basic, launch/download software (BCP3.7-DL) with limited functions is still available and supports most Hobo and StowAway loggers with the exception of the U-series Loggers, Hobo Weather and Micro Stations, LCD logger, and Water Temp Pro loggers.

BoxCar software is supplied with logger to PC cable.

U-series Loggers and Weather Stations require HOBOWare software

Software products are not returnable or refundable.

Part No:  
BoxCar Pro Software BCP4.3-ON

U-series Loggers and Weather Stations require HOBOWare software

## Additional Information

Brand	Onset HOBO
Typical applications	Non Specific