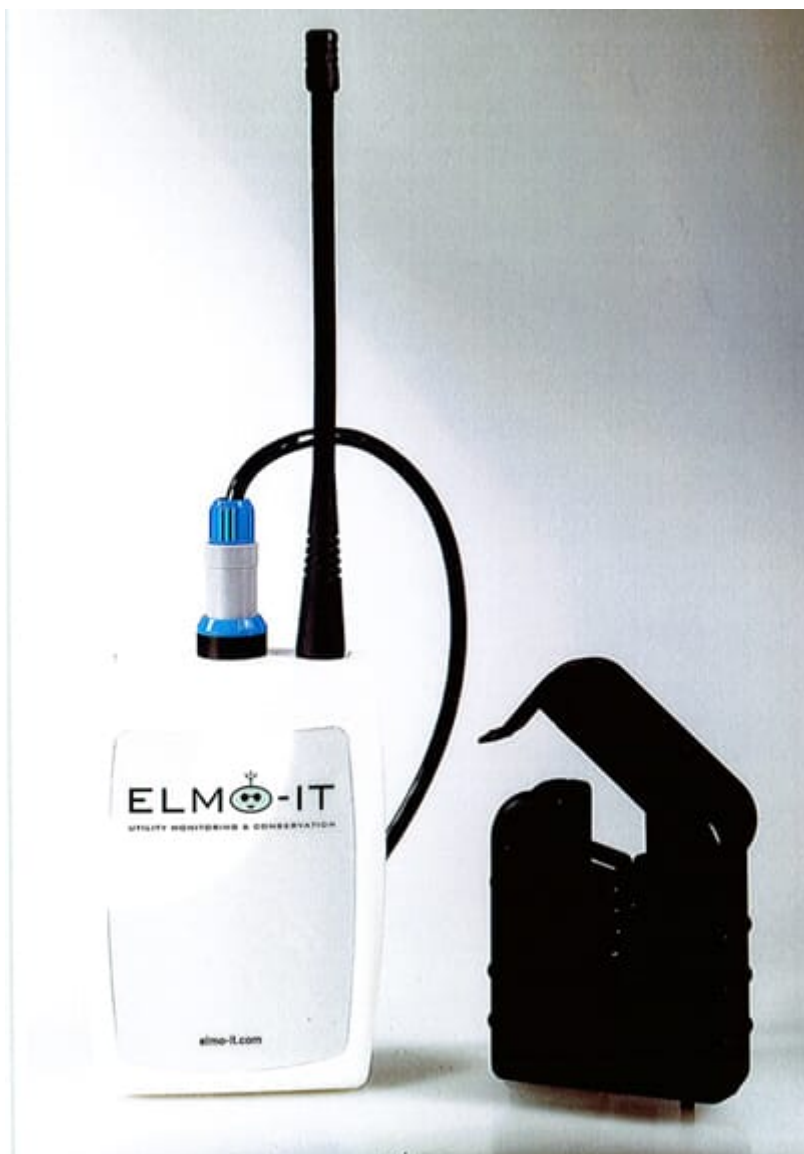




Hanwell

Product Images



Short Description

Need to monitor your energy consumption but don't want the hassle of wired installation on site? Hanwell's new Elmo range uses tried and tested Hanwell radio technology to monitor your energy usage remotely through point-to-point radio (PTP).

Description

Need to monitor your energy consumption but don't want the hassle of wired installation on site? Hanwell's new Elmo range uses tried and tested Hanwell radio technology to monitor your energy usage remotely through point-to-point radio (PTP). With the added benefit that the current clamps can be added without disconnecting existing wiring.

iSense Energy will assist in diagnosing and eliminating areas of wasted energy and accurately report on costs and trends directly from the data it collects. The software allows up-to eight different tariffs to be created allowing an accurate costing of energy use over periods of time and for particular pieces of equipment and/or areas of concern.

Additional Information

Promotion	Tempcon no longer represent IMC Hanwell in the UK, however we do calibrate these products. Please contact us to discuss your requirements. View our extensive range of wireless data logging solutions.
Brand	Hanwell
Typical applications	Building Monitoring, Energy, Environmental (Indoor), Environmental (Outdoor)
Measurements	Current AC