



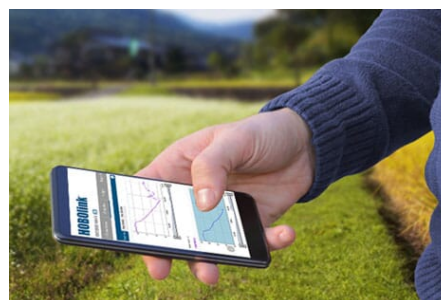
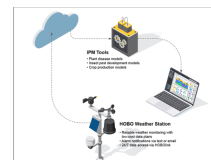
Call our friendly team on
+44 (0)1243 558270

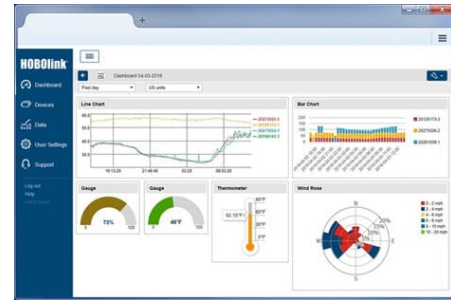
Tempcon Instrumentation
Ford Lane Business Park
Ford
West Sussex
BN18 0UZ, UK
www.tempcon.co.uk



LI-COR Cloud™ IoT Platform - Remote monitoring software solution (formerly HOBOLink)

Product Images





Short Description

Make informed, sustainable decisions using intuitive data management, visualisation, and API integration tools.

Important Information: Cloud service plans are selected when purchasing an RX station, and are also available for most MX Bluetooth data loggers by purchasing an [MX Data Plan](#).

Already have an account? [Go to LI-COR Cloud now](#)

Description

A Monitoring Solution to Help You Make Informed Decisions

LI-COR Cloud is a web-enabled software platform that makes it easy to view and to manage your data remotely.

A comprehensive cloud environmental monitoring platform for HOBO MX & RX products, LI-COR Cloud (formerly HOBOLink) integrates near real-time, research-grade environmental data from IoT RX stations and MX devices into its single, intuitive platform's robust tools.

Customise data management, visualisation, and API integration with enterprise/industry tools for deeper analysis.

Flexible and customisable, LI-COR Cloud lets you choose a plan to match your monitoring application and goals and make the most of your data, giving you 24/7 access and key insights to help you make the most informed decisions and support your sustainability initiatives.

Key Features

- 24/7 access to your data, via a web browser or mobile device
- Near real-time measurements and alert notifications via email/SMS text message (Note: MX loggers require an MX Data Plan per logger and MX Gateway for this functionality).
- Verify HOBO data logger status remotely
- Schedule automated delivery of data
- Configure a dashboard that highlights your most important measurements
- Create dashboards that bring data from multiple systems together in a single view
- Configure calculated channels such as dew point, accumulated rainfall, and evapotranspiration (ET)
- Export the exact date range and sensors you want.

Get notified

LI-COR Cloud will send an email or a text/SMS message to your phone when conditions exceed set thresholds. Multiple levels of alarms and actions can be set for each sensor. You can also set system alarms to let you know when something may have gone wrong and needs attention. Note: MX loggers require an MX Data Plan per logger and MX Gateway for this functionality.

Monitor your stations with Google Maps

LI-COR Cloud integrates Google Maps to allow you to quickly see all your HOBO devices, or get a view of the connection patterns for your HOBOnet system, and drill down on the details. Hover over your device icons to see readings from the last connection, alarm status, and more.

Easy web-based configuration

LI-COR Cloud allows you to easily configure logging rates, alarm notifications, relay actions, and more.

Dashboards

The LI-COR Cloud dashboard enables instant visualisation of your current and historical data, and can be customized to your specific needs with the dashboard builder and our library of widgets.

Compatible with

Most MX Data Loggers, MX Gateway, HOBO MicroRX, RX3000 Remote Monitoring Stations, HOBOnet Field Monitoring Systems.

Features available with only an MX data logger and LI-COR Cloud

- HOBO MX data loggers send data files to the HOBOconnect app on your mobile device (phone/tablet/PC etc) via Bluetooth.
- The data files will upload from your mobile device to your LI-COR Cloud account (when your mobile device has Internet access).
- Receive alerts on your mobile device when the HOBOconnect app is open and you are in range (up to 100-feet) of a HOBO MX logger.

Country of Manufacture

United States

